








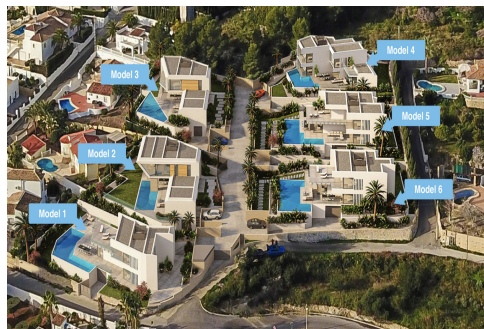
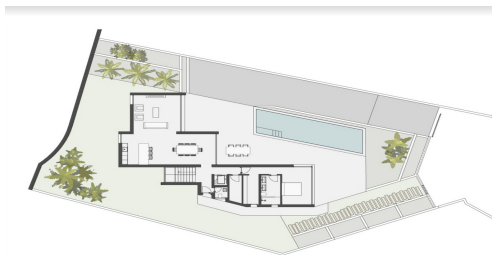
VFM8496H

Price: 1,720,000€



-  **Villa**
-  **Moraira**
-  **3 Bedrooms**
-  **3 Bathrooms**
-  **450m² Build Size**
-  **908m² Plot Size**
-  **Pool: Yes**

We are pleased to be offering these stunning six villas, all with a private swimming pool and stunning views over the Mediterranean Sea. Each house is approximately 450sqm, spread across three storeys, with an open plan basement that provides flexibility and allows various uses to be accommodated within. Additionally, the villas have up to 60sqm of south-facing covered terraces each. The development incorporates the latest innovations in construction materials and techniques, setting new standards in energy efficiency, smart home technologies, wellbeing, comfort and environmental considerations embedded from the early design stage, with susta...



nability at the core of the buildings. The houses offer a unique design developed using sustainably sourced materials, with the appropriate building orientation optimising daylight. The south-facing balconies and terraces benefit from all-day sunlight, while triple-glazed floor-to-ceiling windows maximise the spectacular views over the bay. Photovoltaic panels on the roofs provide energy for daily use, with the villas equipped with highest standard energy-efficient and water-saving appliances. The villas are prepared to be fully equipped with a smart home automation system, which can be operated from any mobile device, which enables to track the performance of individual sensors and to respond accordingly via an automated, centrally operated unit. The system can monitor parameters such as climate (temperature control), lighting, as well as security around the house, and adjust accordingly to pre-set thresholds. The ground floor of every villa comprises a spacious living room, dining area, kitchen, master bedroom with en-suite bathroom and a walk-in closet, and a guest toilet. The living area extends to the outdoors with large covered terraces and the swimming pool, as well as Mediterranean gardens. The first floor has two en-suite bedrooms with walk-in closets boasting views of the Mediterranean Sea and the Natural Park of Peñón de Ifach. Each villa has an internal lift joining the three storeys, with a garage located in the basement.