

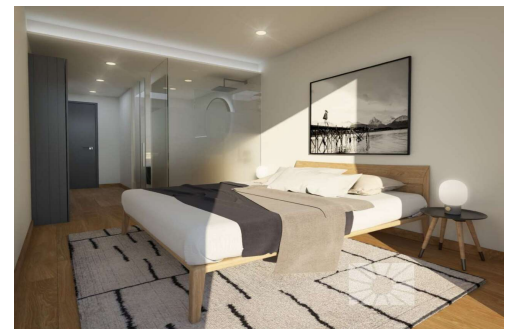
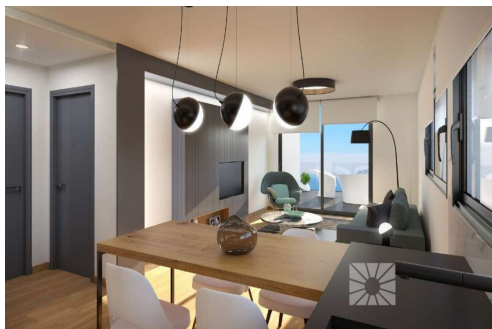
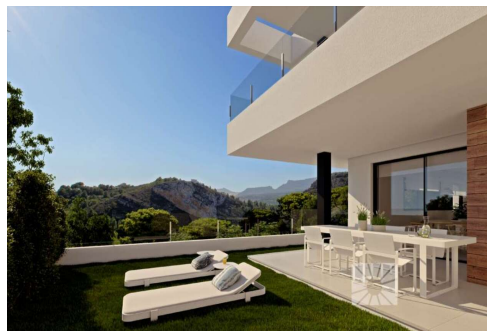
VES7450B

Price: 272,165€



-  **Apartment**
-  **Benitachell**
-  **2 Bedrooms**
-  **2 Bathrooms**

New built apartments, with a modern architecture, with 2 bedrooms and 2 bathrooms, kitchen open to the living room, with various models to choose from, terrace and garden on the ground floor apartments, and solarium on the top floor, all distributed to make the most of the space, taking advantage of the Mediterranean light and offering a plus of comfort in your day to day. The equipment in the apartments are also oriented to comfort with under-floor heating, hot and cold air conditioning by conduits with thermostat in the living room, hot water by Altherma system, electrical appliances are included and a project of decoration to give them styl...





Puerto de Mazarron Office: +34 968 153 787

Mazarron Office: +34 968 974 918

Web: www.villaquest.co.uk

Email: info@villaquest.co.uk

and warmness. The communal areas are designed for relax and enjoy as a family, with pool surrounded by large terraces to enjoy the sun, playground for kids, social club, gardens and parking areas. Within a short distance to Cala del Llebeig, the urban core of Moraira and all the services that Residential Resort Cumbre del Sol is equipped with.